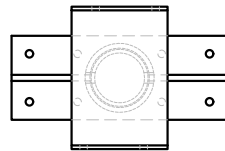


SKY LIFT HEAVY DUTY RISER

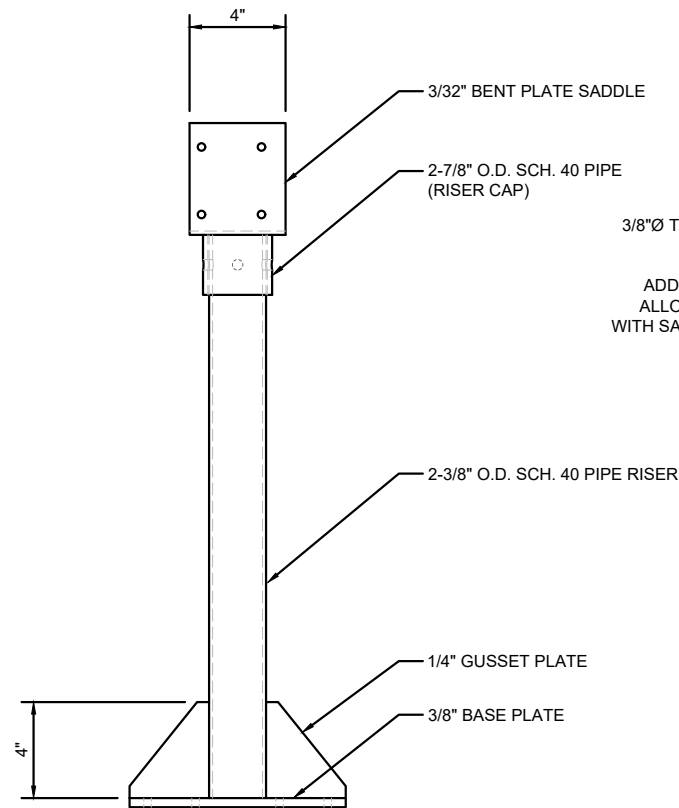
SERIES (RISER HT.)	MODEL #	WEIGHT	DIMENSIONS		NOTES
			W ³	H	
SK18-HD	SK18-HD 3.5	15 LBS	3-1/2"	18"	
	SK18-HD 5.5	15.2 LBS	5-1/2"	18"	
	SK18-HD 4R	15 LBS	4"	18"	SADDLE WIDTH SIZED FOR FULLSAWN OR ROUGHSAWN BEAMS
	SK18-HD 6R	15.2 LBS	6"	18"	SADDLE WIDTH SIZED FOR FULLSAWN OR ROUGHSAWN BEAMS
SK24-HD	SK24-HD 3.5	16.6 LBS	3-1/2"	24"	
	SK24-HD 5.5	17 LBS	5-1/2"	24"	
	SK24-HD 4R	16.6 LBS	4"	24"	SADDLE WIDTH SIZED FOR FULLSAWN OR ROUGHSAWN BEAMS
	SK24-HD 6R	17 LBS	6"	24"	SADDLE WIDTH SIZED FOR FULLSAWN OR ROUGHSAWN BEAMS
SK30-HD	SK30-HD 3.5	19 LBS	3-1/2"	30"	
	SK30-HD 5.5	19.2 LBS	5-1/2"	30"	
	SK30-HD 4R	19.1 LBS	4"	30"	SADDLE WIDTH SIZED FOR FULLSAWN OR ROUGHSAWN BEAMS
	SK30-HD 6R	19.2 LBS	6"	30"	SADDLE WIDTH SIZED FOR FULLSAWN OR ROUGHSAWN BEAMS
SK36-HD	SK36-HD 3.5	21 LBS	3-1/2"	36"	
	SK36-HD 5.5	21.2 LBS	5-1/2"	36"	

NOTES:

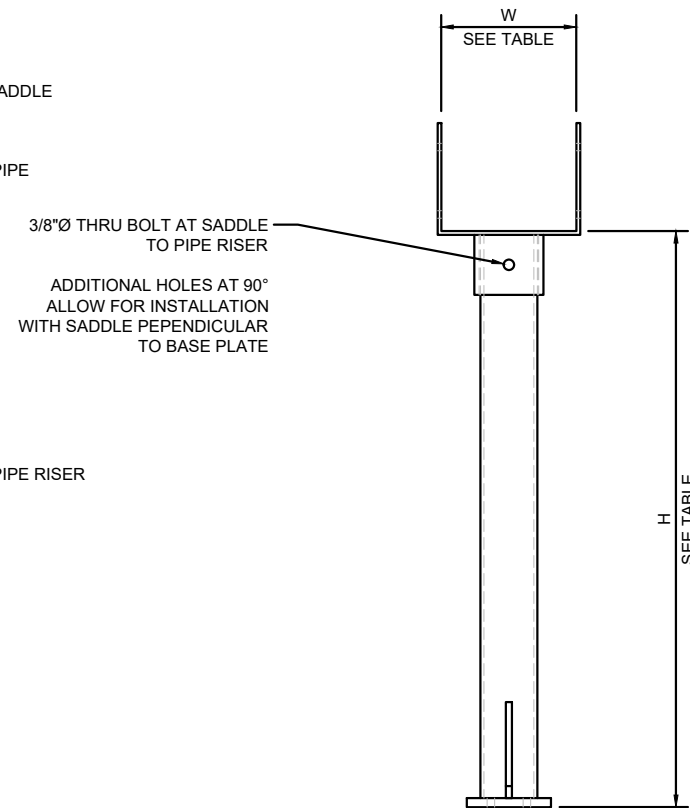
1. FINISH OF ALL SKY LIFT RISER ASSEMBLIES IS POWDER-COATED BLACK, UNLESS NOTED OTHERWISE.
2. USE PROVIDED FASTENERS FOR INSTALLATION. DO NOT SUBSTITUTE FASTENERS.
3. REQUIRED SADDLE SIZE IS FOUND BY USING COLUMN 'W' ON TABLE ABOVE (VALUE EQUALS BEAM WIDTH. 1/8" ADDED TO MANUFACTURED WIDTH TO ALLOW FOR INSTALLATION).
4. BECAUSE STRUCTURAL AND CODE REQUIREMENTS VARY GREATLY BETWEEN INSTALLATION SITES AND JURISDICTIONS, ALL PERMITTING, STRUCTURAL DESIGN, STAMPED DRAWINGS/CALCULATIONS AND INSPECTIONS ARE SOLE RESPONSIBILITY OF PURCHASER. SKYLIFT ROOF RISER HARDWARE AND SAGE BRACKET SOLUTIONS, LLC MAINTAINS AND ACCEPTS NO RESPONSIBILITY/LIABILITY FOR SKYLIFT PROVIDED ASSEMBLIES OR HARDWARE THAT IS NOT INSTALLED PER OFFICIAL SKYLIFT ROOF RISER INSTALLATION INSTRUCTIONS (REV 6/14/12), LOCAL CODE REQUIREMENTS AND LOCALLY-LICENSED ENGINEER INSTRUCTIONS AND CALCULATIONS. INSTALLATION OF SKY LIFT PRODUCTS REQUIRES OBTENTION OF LOCAL BUILDING PERMITS AND IS INTENDED TO BE USED WITHIN A STRUCTURAL SYSTEM DESIGNED BY A LOCALLY-LICENSED PROFESSIONAL ENGINEER.



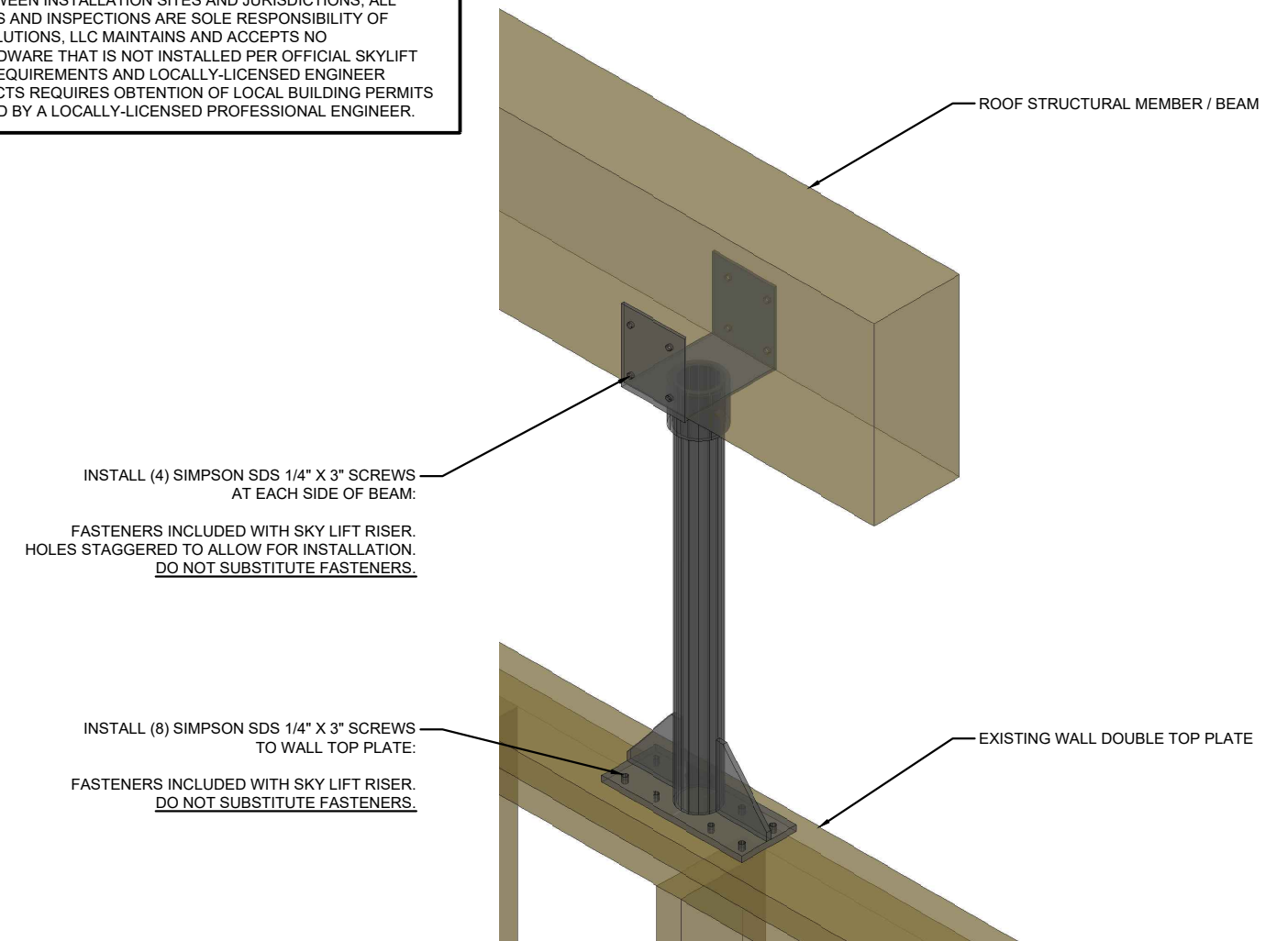
TOP VIEW



FRONT VIEW



SIDE VIEW



THREE-DIMENSIONAL VIEW

FOR ILLUSTRATIVE PURPOSES ONLY



PART NUMBER(S):

SK18, SK24,
SK30, SK36

DRAWING NAME:

SKY LIFT
HEAVY DUTY RISER

EGDS PROJECT NO.: SL1

REVISIONS

NO.	DATE	DRAWN	DESCRIPTION
0	11-12-18	EG	REVISION A
1	01-05-19	EG	REVISION B

SHEET TITLE
SPECIFICATIONS
(CLIENT)

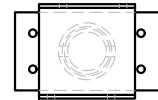
SHEET NO.
SP-1

SKY LIFT STANDARD DUTY RISER

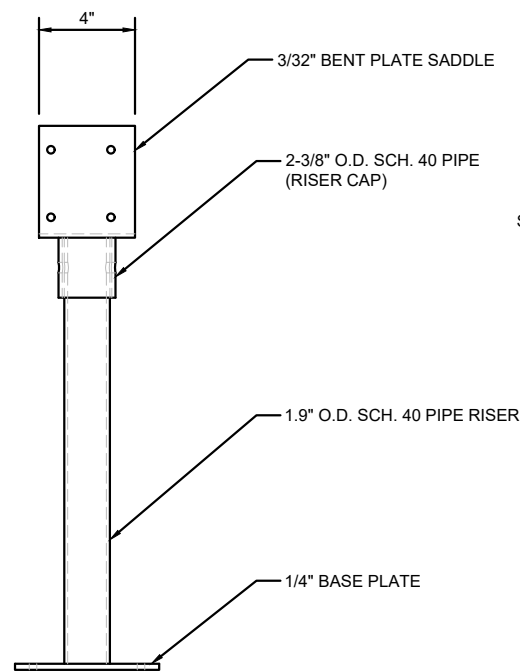
SERIES (RISER HT.)	MODEL #	WEIGHT	DIMENSIONS		NOTES
			W ³	H	
SK18-B	SK18-HD 3.5	8.6 LBS	3-1/2"	18"	STANDARD DUTY FOR POLYCARBONATE COVER AND TRELLIS SUPPORT
SK24-B	SK18-HD 5.5	9.8 LBS	3-1/2"	24"	STANDARD DUTY FOR POLYCARBONATE COVER AND TRELLIS SUPPORT

NOTES:

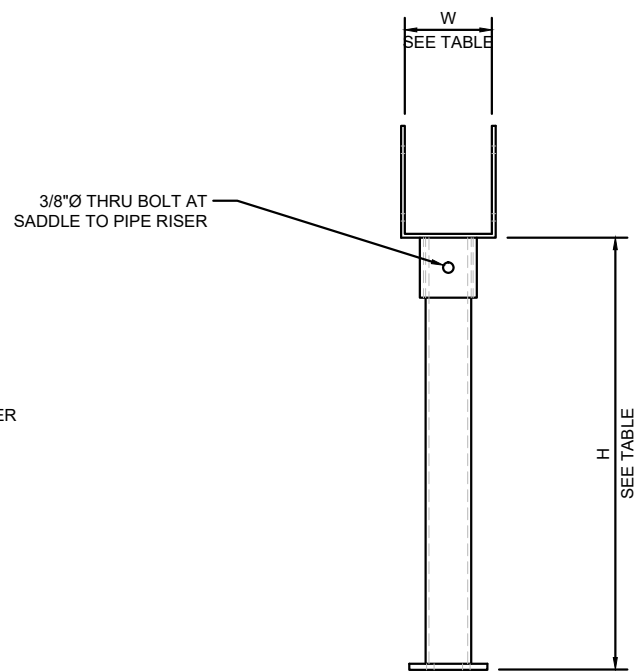
1. FINISH OF ALL SKY LIFT RISER ASSEMBLIES IS POWDER-COATED BLACK, UNLESS NOTED OTHERWISE.
2. USE PROVIDED FASTENERS FOR INSTALLATION. DO NOT SUBSTITUTE FASTENERS.
3. REQUIRED SADDLE SIZE IS FOUND BY USING COLUMN "W" ON TABLE ABOVE (VALUE EQUALS BEAM WIDTH. 1/8" ADDED TO MANUFACTURED WIDTH TO ALLOW FOR INSTALLATION).
4. BECAUSE STRUCTURAL AND CODE REQUIREMENTS VARY GREATLY BETWEEN INSTALLATION SITES AND JURISDICTIONS, ALL PERMITTING, STRUCTURAL DESIGN, STAMPED DRAWINGS/CALCULATIONS AND INSPECTIONS ARE SOLE RESPONSIBILITY OF PURCHASER. SKYLIFT ROOF RISER HARDWARE AND SAGE BRACKET SOLUTIONS, LLC MAINTAINS AND ACCEPTS NO RESPONSIBILITY/LIABILITY FOR SKYLIFT PROVIDED ASSEMBLIES OR HARDWARE THAT IS NOT INSTALLED PER OFFICIAL SKYLIFT ROOF RISER INSTALLATION INSTRUCTIONS (REV 6/14/12), LOCAL CODE REQUIREMENTS AND LOCALLY-LICENSED ENGINEER INSTRUCTIONS AND CALCULATIONS. INSTALLATION OF SKY LIFT PRODUCTS REQUIRES OBTENTION OF LOCAL BUILDING PERMITS AND IS INTENDED TO BE USED WITHIN A STRUCTURAL SYSTEM DESIGNED BY A LOCALLY-LICENSED PROFESSIONAL ENGINEER.



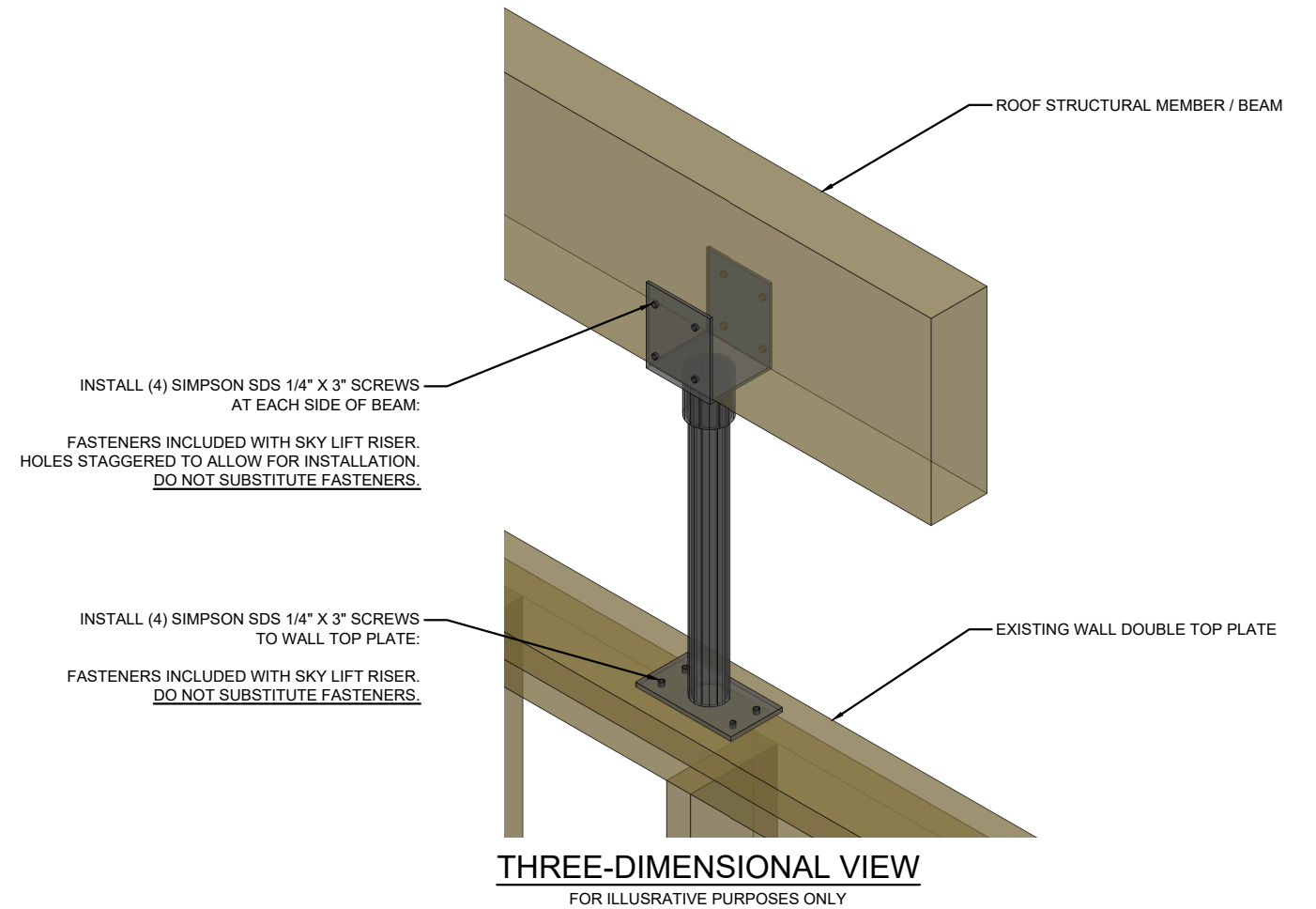
TOP VIEW



FRONT VIEW



SIDE VIEW



THREE-DIMENSIONAL VIEW
FOR ILLUSTRATIVE PURPOSES ONLY



PART NUMBER(S):

SK18, SK24,
SK30, SK36

DRAWING NAME:

SKY LIFT
HEAVY DUTY RISER

EGDS PROJECT NO.: SL1

REVISIONS

NO.	DATE	DRAWN	DESCRIPTION
0	11-18-18	EG	REVISION A
1	01-05-19	EG	REVISION B

SHEET TITLE

SPECIFICATIONS
(CLIENT)

SHEET NO.

SP-2