

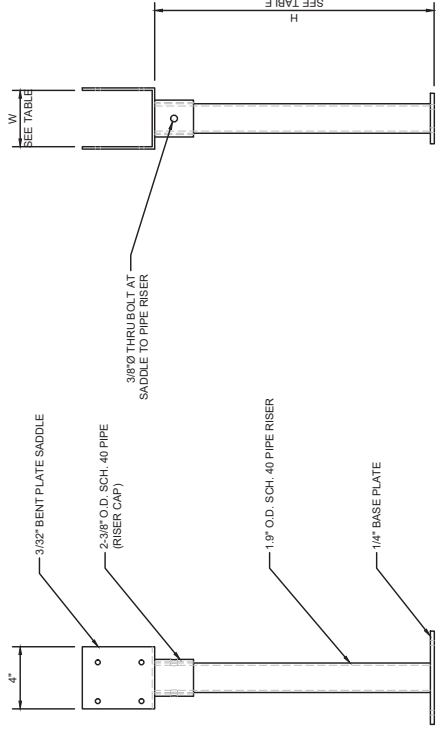
SKY LIFT STANDARD DUTY RISER

SERIES (RISER HT.)	MODEL #	WEIGHT	DIMENSIONS			NOTES
			W	H	H	
SK18B	SK18-HD 3.5	8.6 LBS	3-1/2"	18"	24"	STANDARD DUTY FOR POLYCARBONATE COVER AND TRELLIS SUPPORT
SK24B	SK24-HD 5.5	9.8 LBS	3-1/2"	18"	24"	STANDARD DUTY FOR POLYCARBONATE COVER AND TRELLIS SUPPORT

NOTES:
 1. FINISH OF ALL SKY LIFT RISER ASSEMBLIES IS POWDER-COATED BLACK, UNLESS NOTED OTHERWISE.
 2. REQUIRED SADDLE SIZE IS FOUND BY USING COLUMN "W" ON TABLE ABOVE (VALUE EQUALS BEAM WIDTH, 18" ADDED TO MANUFACTURED WIDTH TO ALLOW FOR INSTALLATION).
 3. BECAUSE STRUCTURAL AND CODE REQUIREMENTS VARY GREATLY BETWEEN INSTALLATION SITES AND JURISDICTIONS, ALL PERMITTING, STRUCTURAL DESIGN, STAMPED DRAWINGS, CALCULATIONS AND INSPECTIONS ARE SOLE RESPONSIBILITY OF THE INSTALLER. SKY LIFT PROVIDES ASSEMBLIES OR HARDWARE THAT IS NOT INSTALLED PER ORIGINAL SKY LIFT ROOF RISER INSTALLATION INSTRUCTIONS (REV 6/14/12). LOCAL CODE REQUIREMENTS AND LOCALLY-LICENSED ENGINEER INSTRUCTIONS AND CALCULATIONS. INSTALLATION OF SKY LIFT PRODUCTS REQUIRES OBTENTION OF LOCAL BUILDING PERMITS AND IS INTENDED TO BE USED WITHIN A STRUCTURAL SYSTEM DESIGNED BY A LOCALLY-LICENSED PROFESSIONAL ENGINEER.

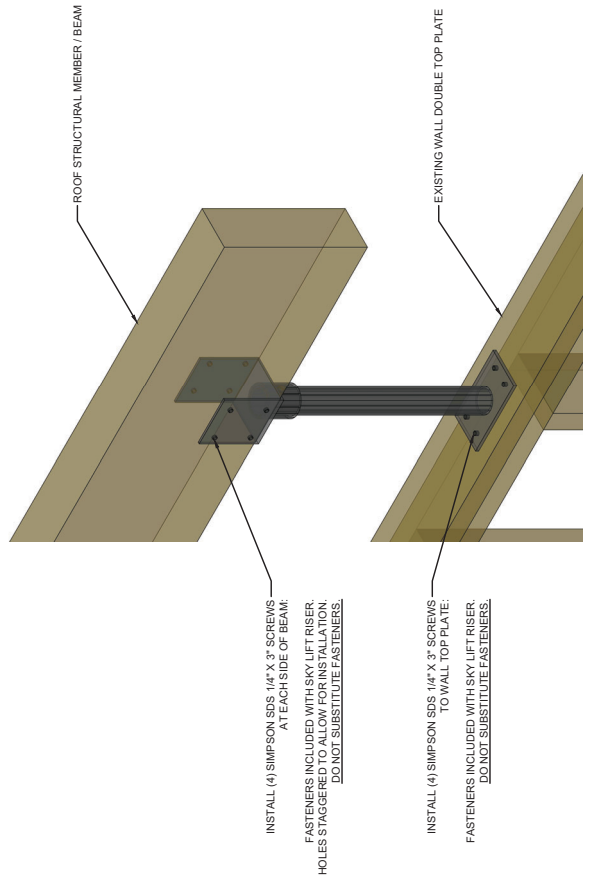


TOP VIEW



FRONT VIEW

SIDE VIEW



THREE-DIMENSIONAL VIEW

FOR ILLUSTRATIVE PURPOSES ONLY



PART NUMBER(S):
 SK18, SK24,
 SK30, SK36
DRAWING NAME:
 SKY LIFT
 HEAVY DUTY RISER

LEGOS PROJECT NO.: SLU			
NO.	DATE	DRAWN	DESCRIPTION
0	11-18-18	LEG	REVISION A
1	10-05-19	ES	REVISION B

SHEET TITLE
SPECIFICATIONS
 (CLIENT)
 SHEET NO.
SP-2